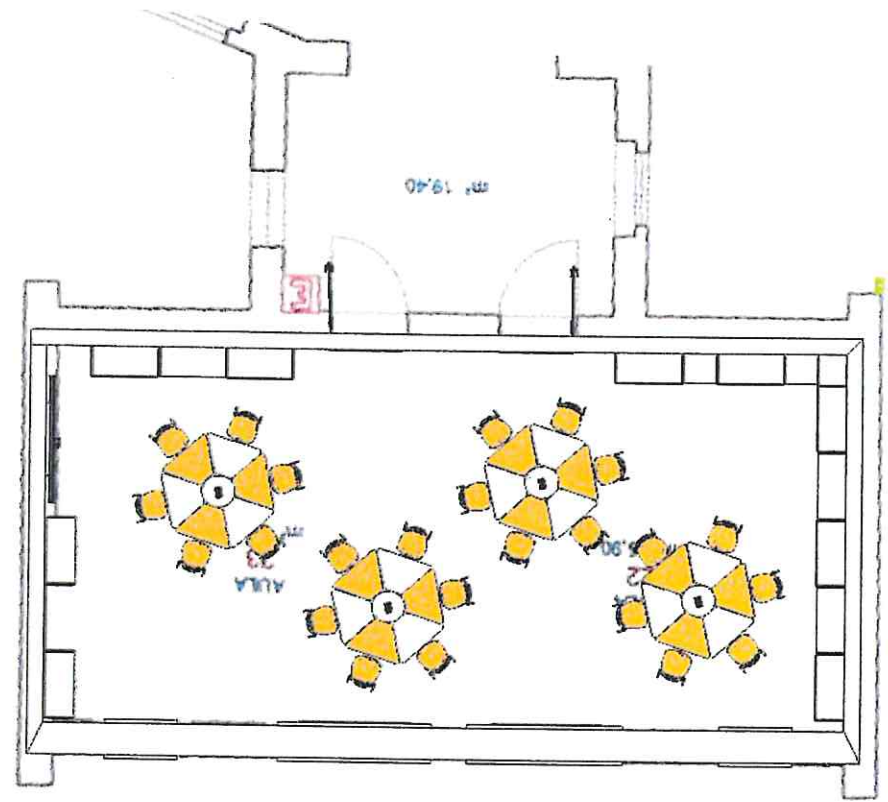


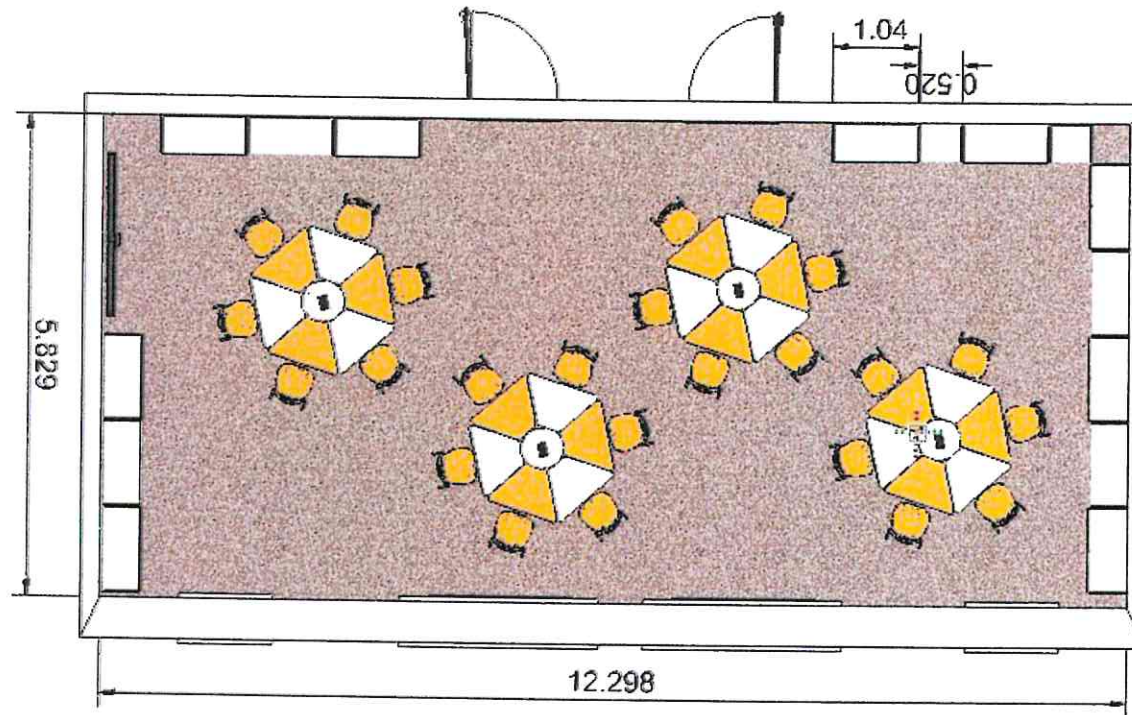
I.C. RITA LEVI-MONTALCINI DI ISEO (BS)

PNRR SCUOLA 4.0

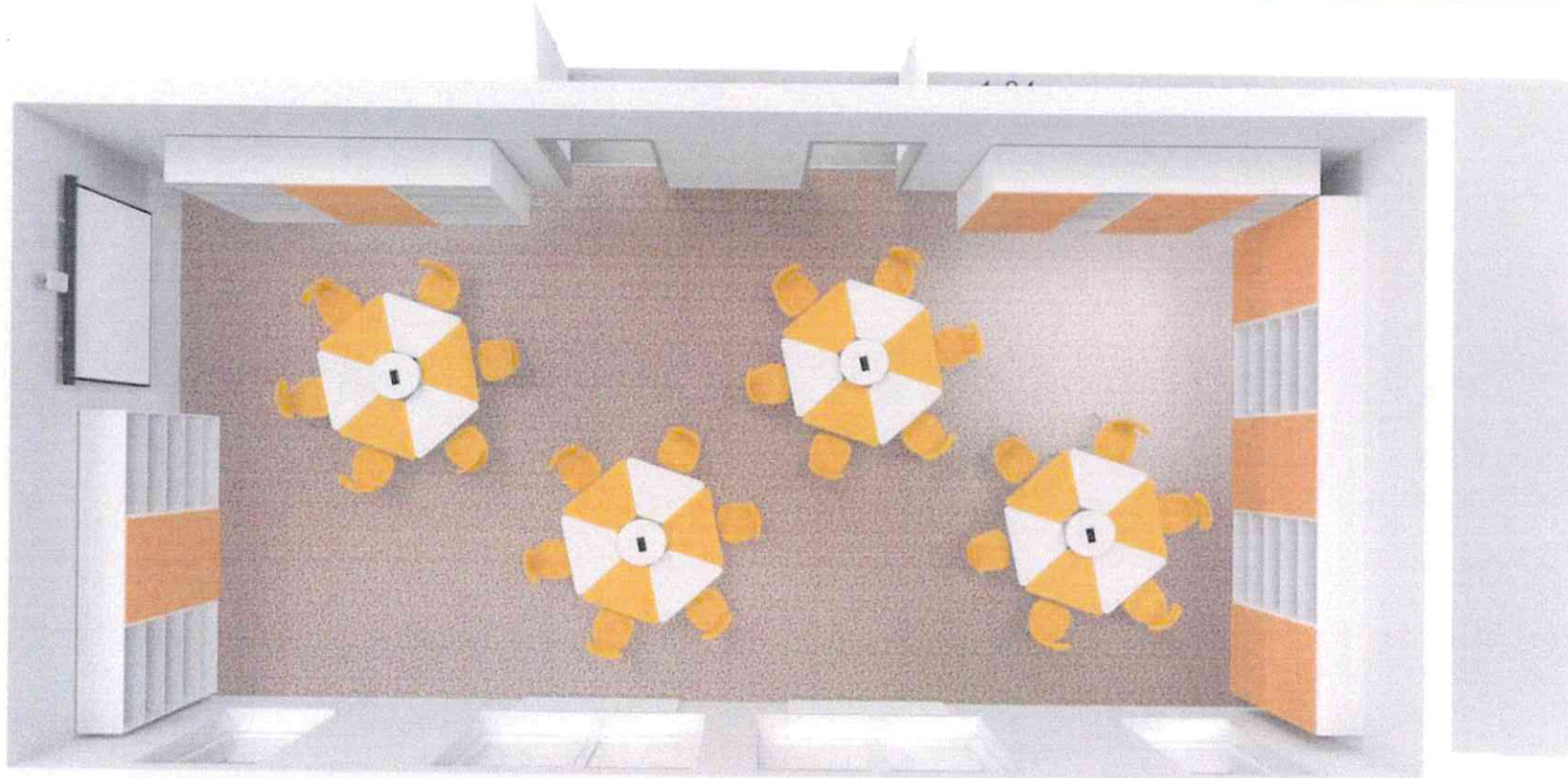
ARREDI INNOVATIVI

CAPITOLATO





BSIC80300R - AD253AE - REGISTRO PROTOCOLLO - 0003711 - 19/06/2023 - VI.3 - U
PLANIMETRIA 3D (PARETE DI FONDO SULLA DESTRA DI 4 ELEMENTI GIA' ORDINATA+1
MODULO DA 52CM APERTO)



Firmato digitalmente da EMILGUERRI CHIARA





VISTE 3D



Firmato digitalmente da EMILGUERRI CHIARA

