

**La casa  
sull'albero**

-

**Ambiente di  
apprendimento  
immerso nella  
natura**

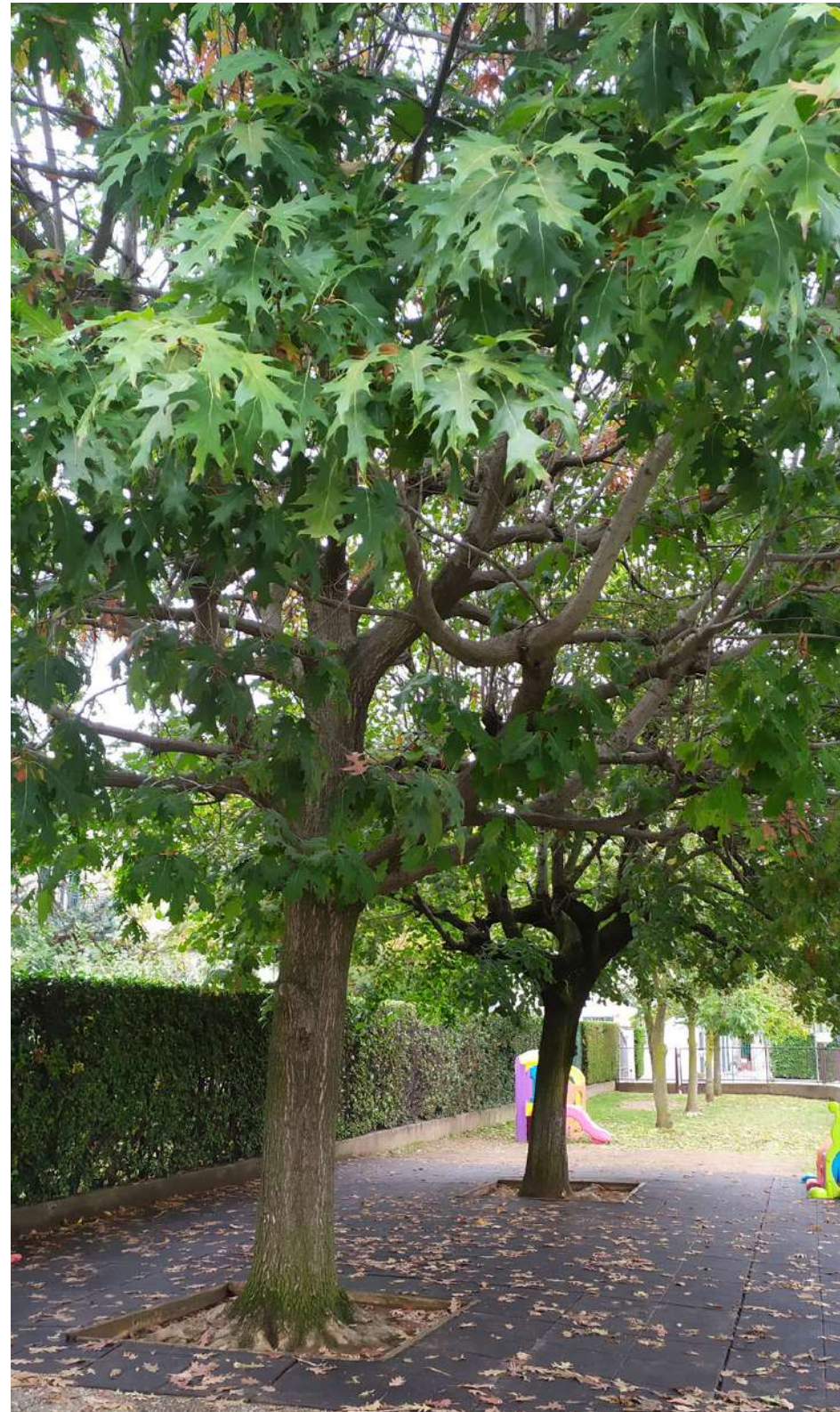
-

**ascoltare  
osservare  
immaginare  
imparare  
mettersi alla  
prova**



**Scuola dell'infanzia  
Castelnuovo Bozzente  
IC OLGiate COMASCO**

**Ambiente dove  
dovrà collocarsi il  
nuovo spazio di  
apprendimento**

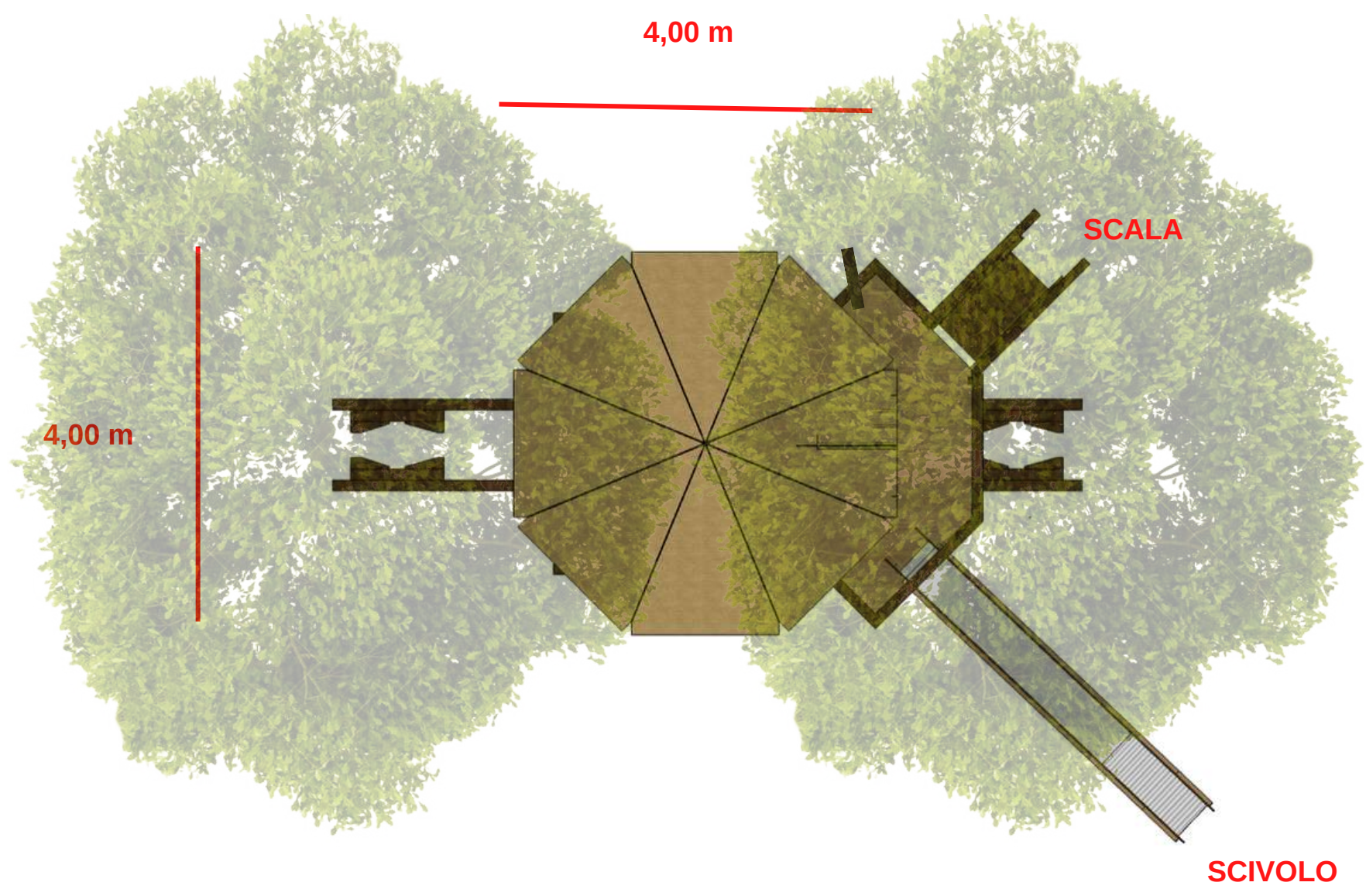


**SI RISPETTERANNO GLI ALBERI PRESENTI**

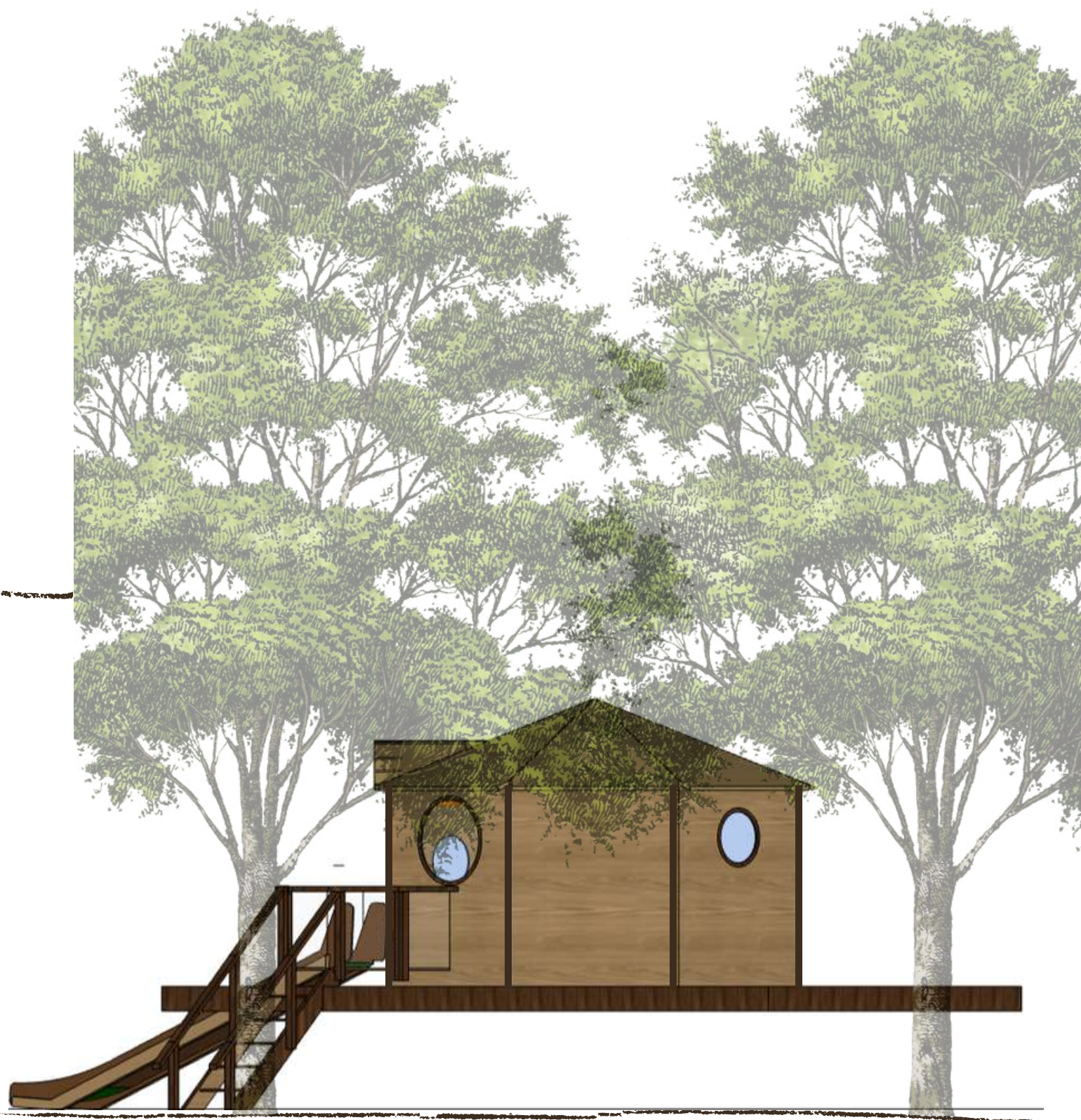


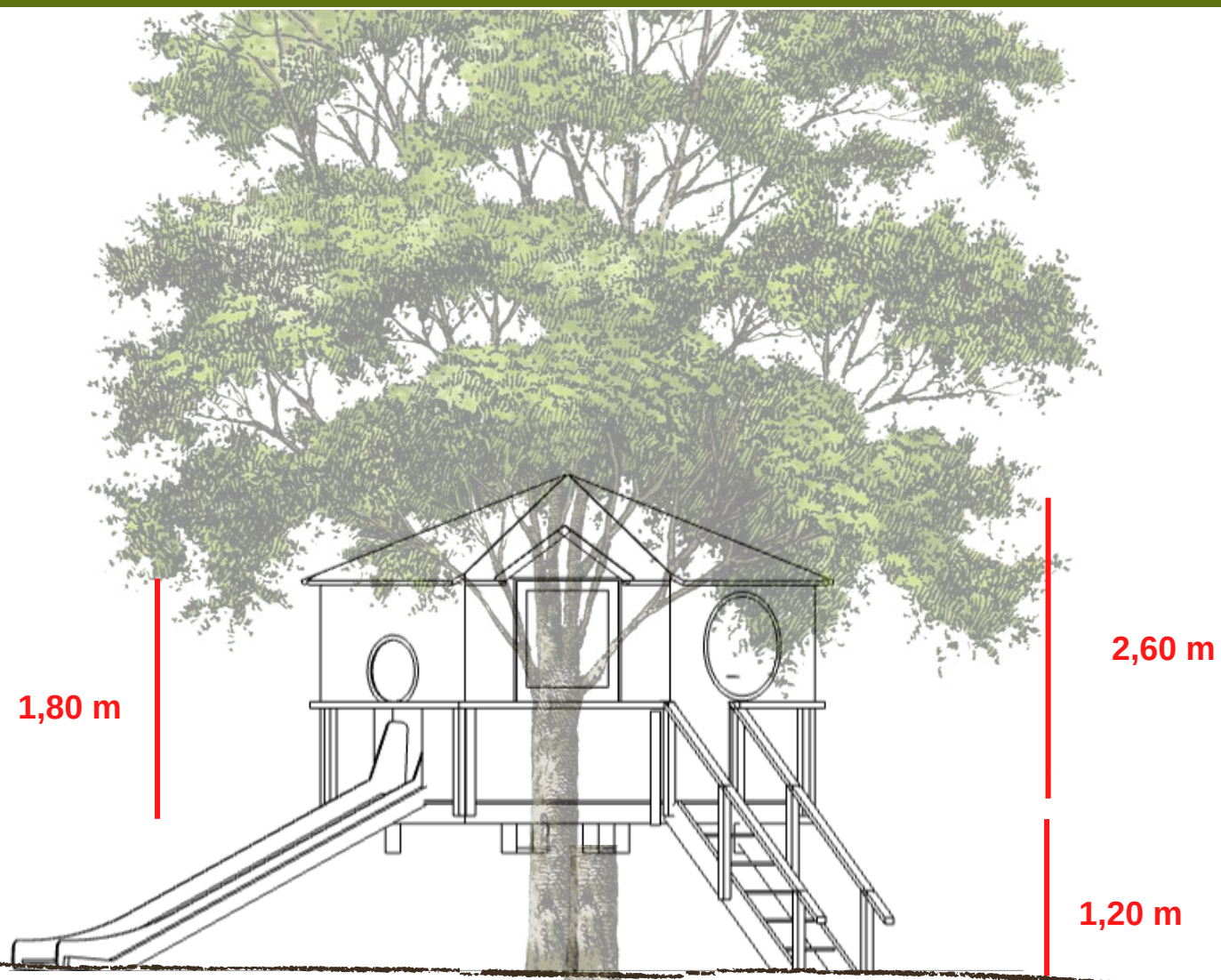








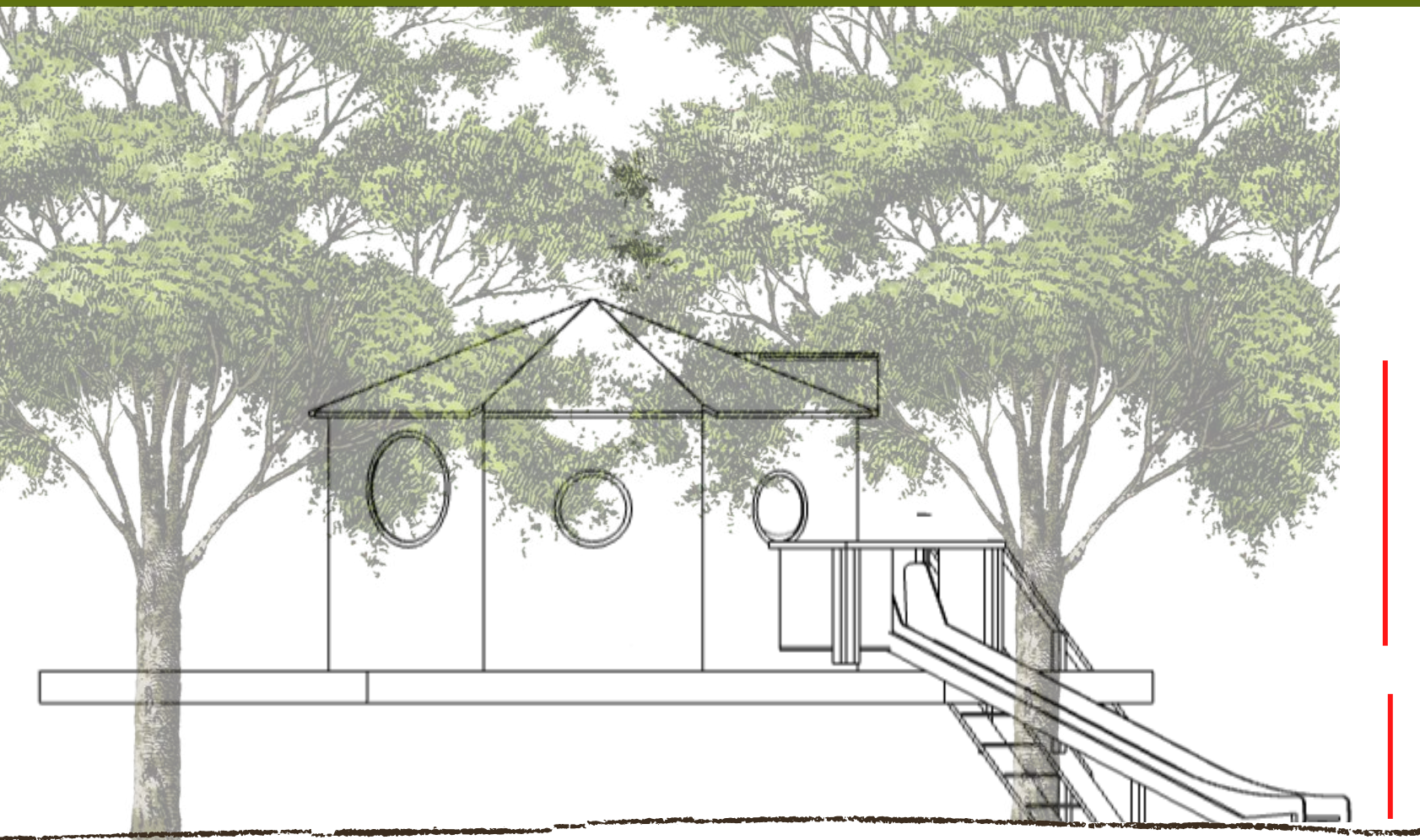




4,00 m

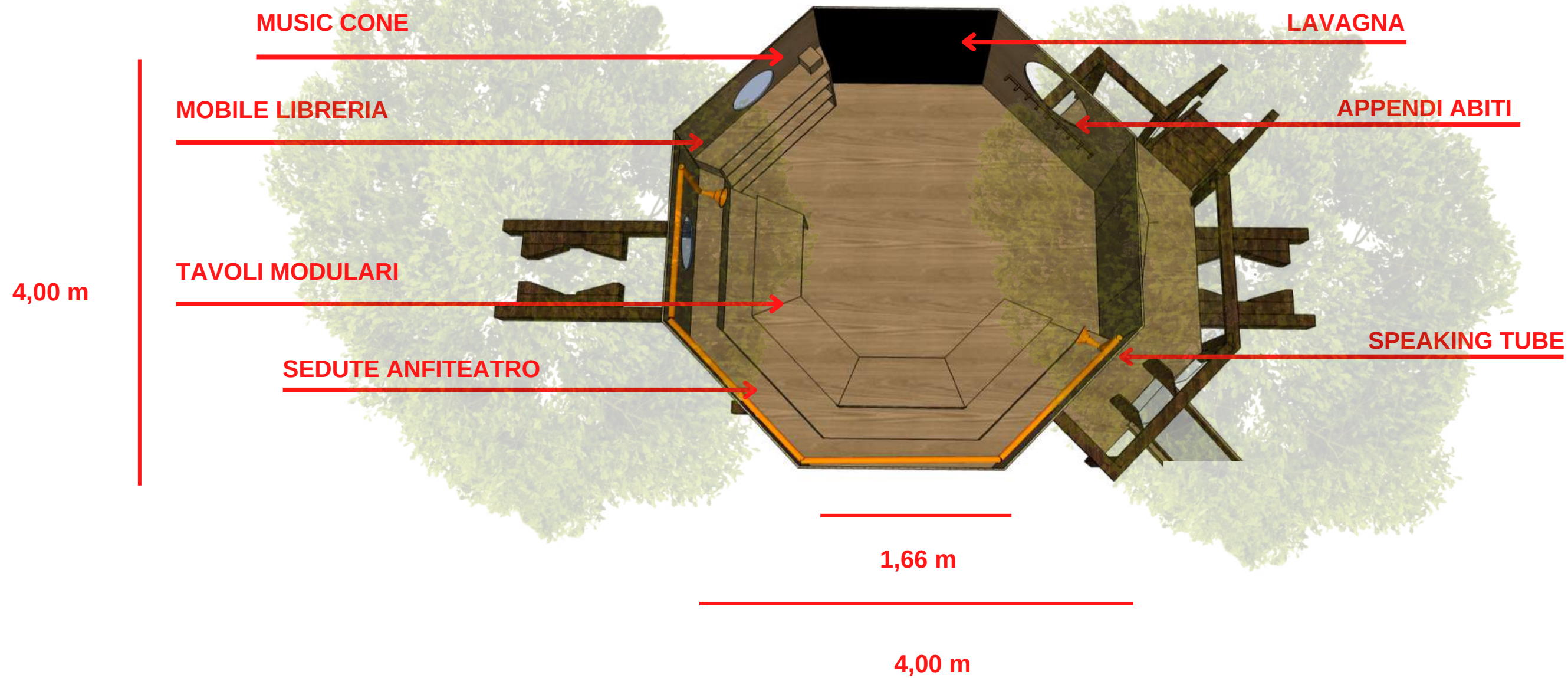
A horizontal red dimension line indicates a width of 4,00 m across the main platform of the treehouse.



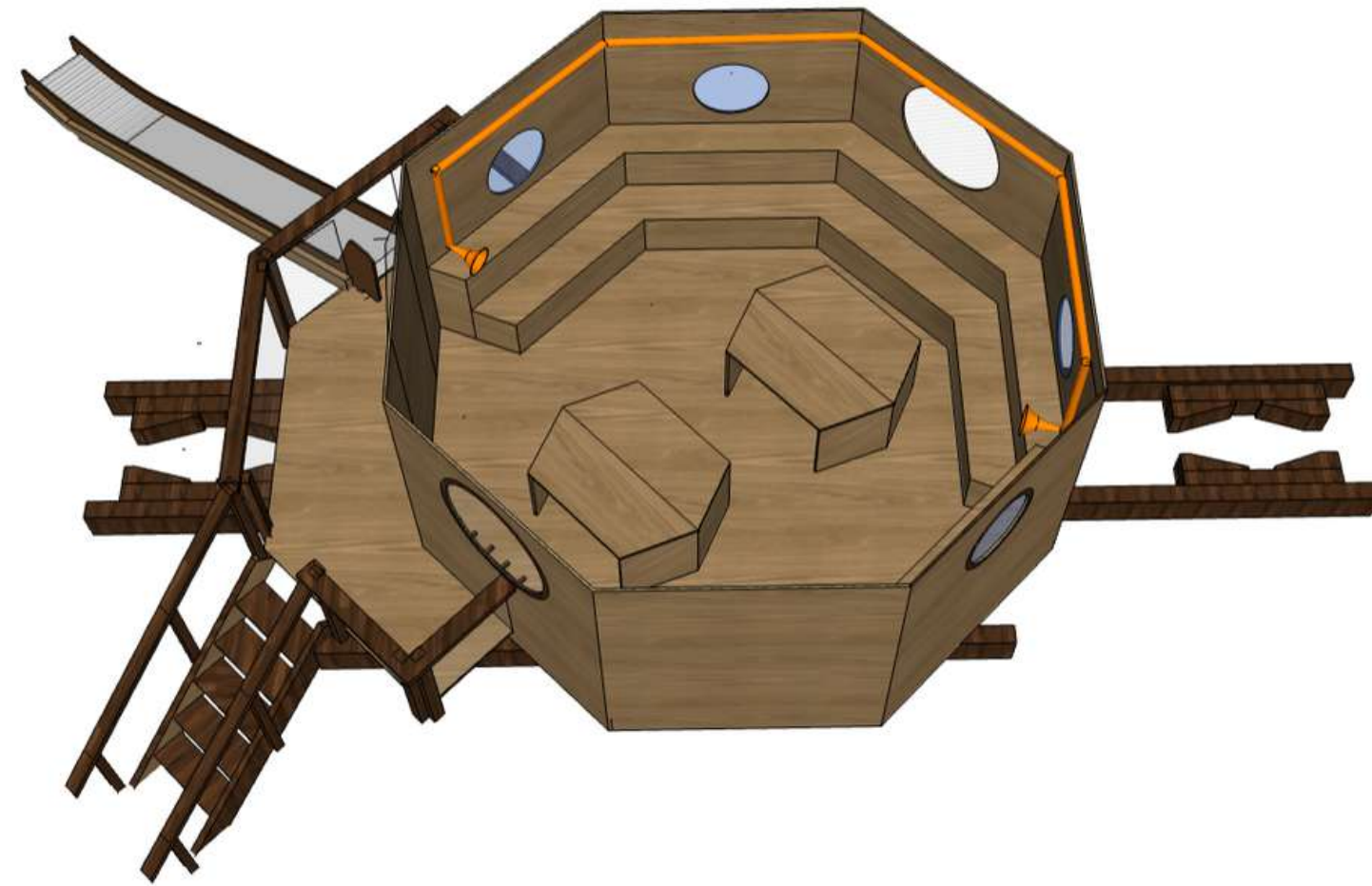
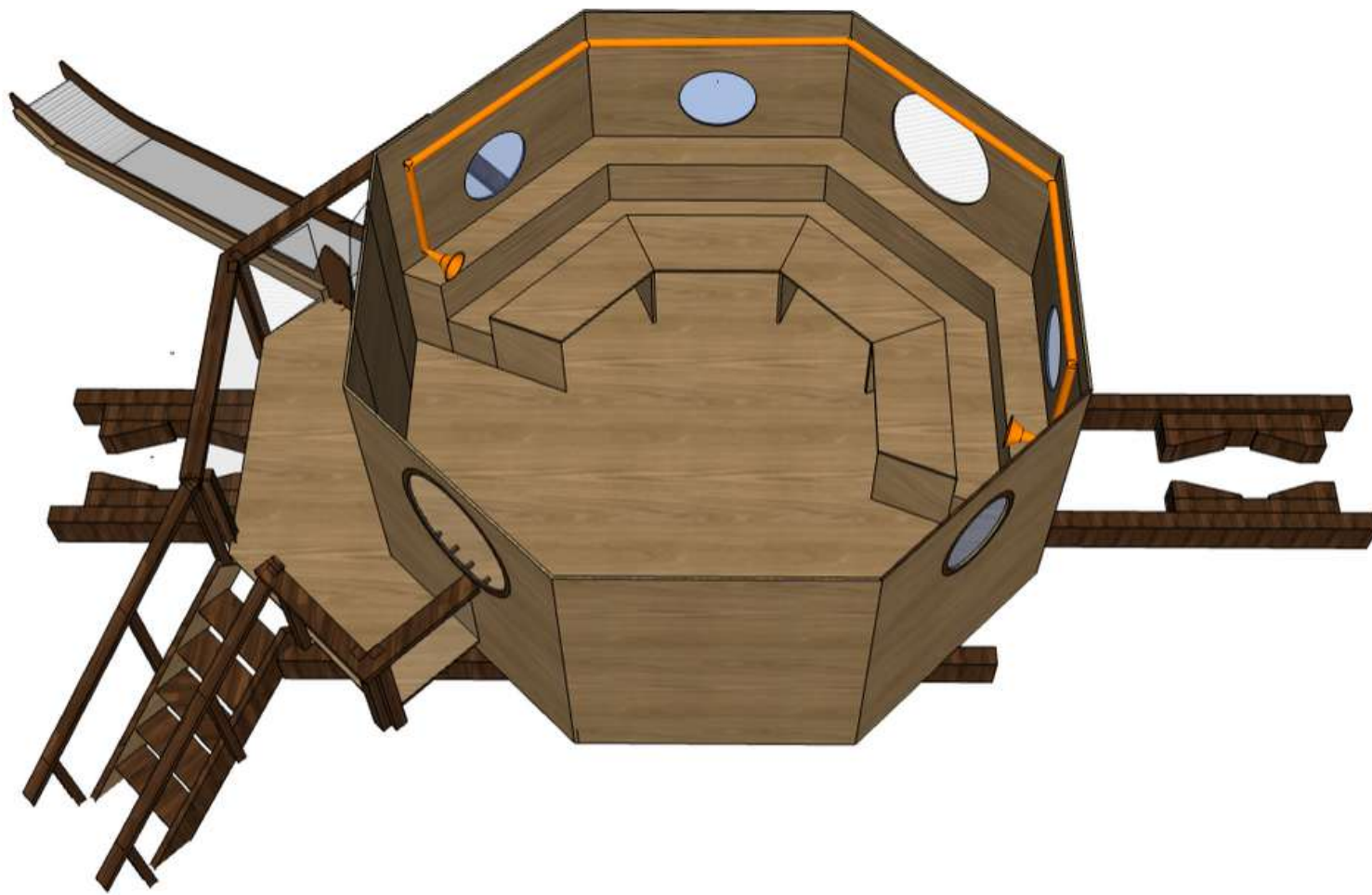


4,00 m



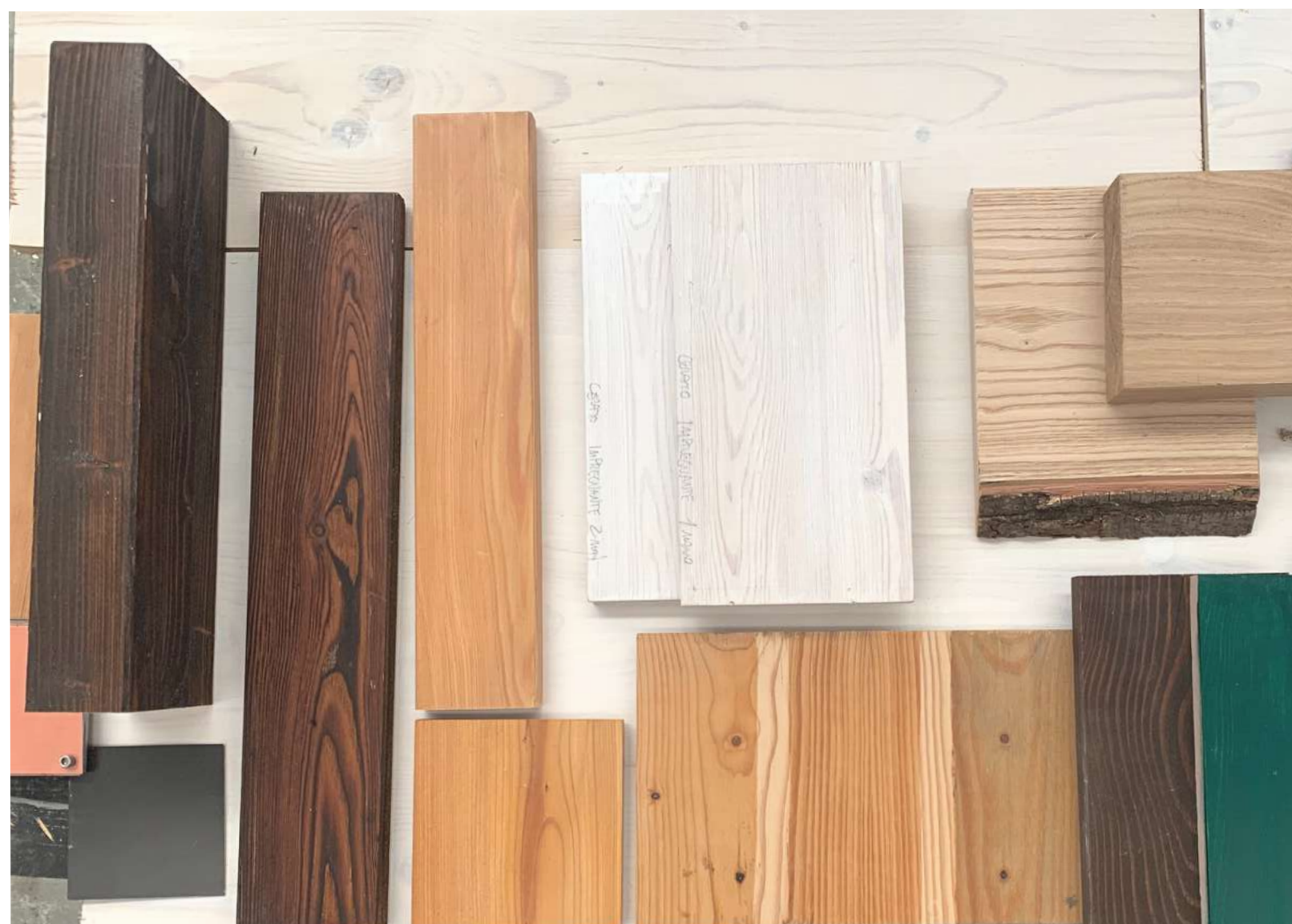


- Finestre ad oblò per osservare trasparenti in policarbonato
- con rete nera per oscurare





**COPERTURA - PAGLIA**



**PARETI - PAVIMENTI - FINITURE DEGLI ELEMENTI INTERNI ED ESTERNI**

## **Materiali e colori**

